

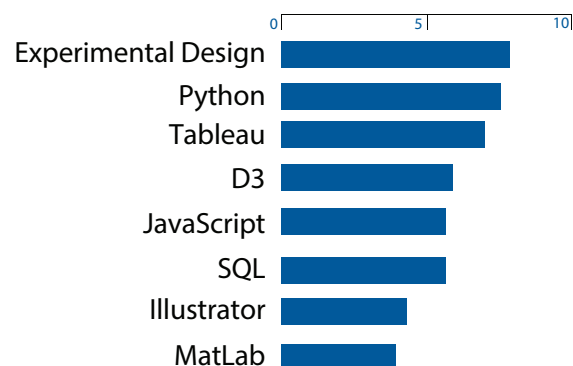
Colin Gerber

Web: www.ColinGerber.com
Email: colin.gerber@gmail.com
Phone: 858 775 0580

EDUCATION

- 2013 - 2015 + I School at UC Berkeley
[MIMS \(Masters in Information Management and Systems\)](#)
- 2007 - 2011 + UC Santa Barbara
[BS Neuroscience](#)

SKILLS



WORK EXPERIENCE

- 2014 - 2015 + **llumina**
[Global Marketing Data Scientist - Contractor](#)
 - Responsible for all metrics related to large scale app and instrument platform.
 - Collected requirement from a variety of business units to create targeted metric reports.
 - Skills: Python, SQL, JavaScript, Tableau
- 2014 - 2014 + **llumina**
[Global Marketing Intern](#)
 - Built a metrics reporting tool from the ground up.
 - Skills: Python, SQL, JavaScript, Tableau
- 2013 - 2015 + **Homeland Security Fellowship - Nuclear Forensics**
[Graduate Research Assistant](#)
 - Developing a program to identify the Nuclear Reactor type of unknown fuel cell samples.
 - Skills: Python, Machine Learning
- 2011-2013 + **National Institutes of Health**
[Postbaccalaureate Intramural Research Training Award](#)
 - Developed experiments looking into the motor deficits seen in Parkinson's Disease patients.
 - Created several scripts and workflows that greatly increased the efficiency of data analysis being done in the lab.
 - Skills: MatLab, Spike 2, Electrophysiology, Neuropharmacology
- 2009-2011 + **UC Santa Barbara**
[Research Assistant](#)
 - Created MatLab algorithms to analyze experimental and fMRI data.
 - Ran category learning experiments with human subjects.
 - Skills: MatLab, Human Subject Research

PUBLICATIONS

Journal of Neuroscience:
Subthalamic nucleus activity in the awake hemiparkinsonian rat: relationships with motor and cognitive networks - In Press

State Dependent Spike and Local Field Synchronization between Motor Cortex and Substantia Nigra in Hemiparkinsonian Rats - 2012

Artificial Intelligence in Education:
Understanding Student Success in Chemistry using Gaze Tracking & Pupillometry - 2015

SFN San Diego:
Motor Cortex and Prefrontal Cortex Show Coherence with Subthalamic Nucleus Activity in Different Beta and Gamma Frequency Ranges in Awake Behaving Hemiparkinsonian Rats - 2013

Interests

Water Polo
Public Education - Quora.com
Science Fiction Literature